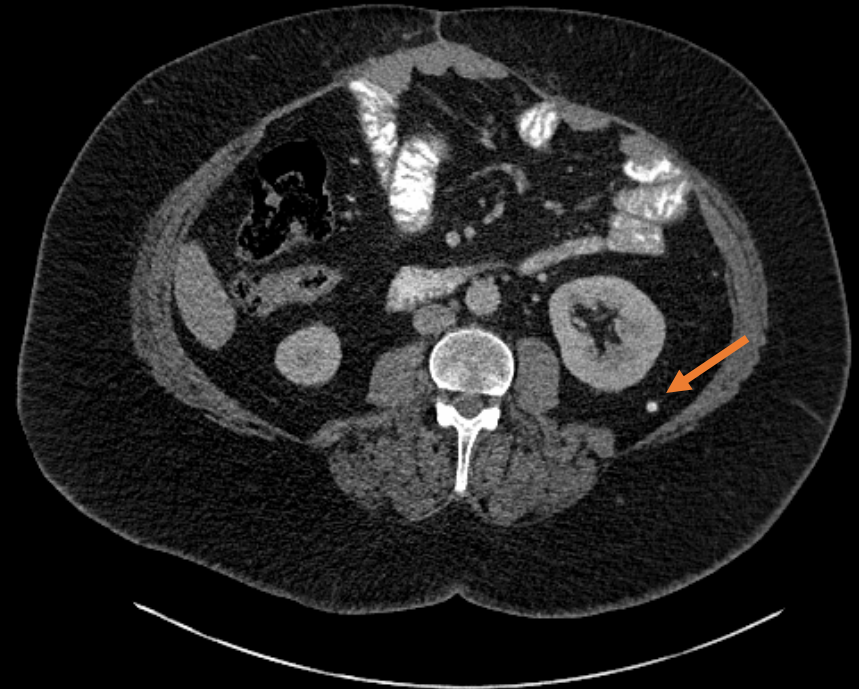
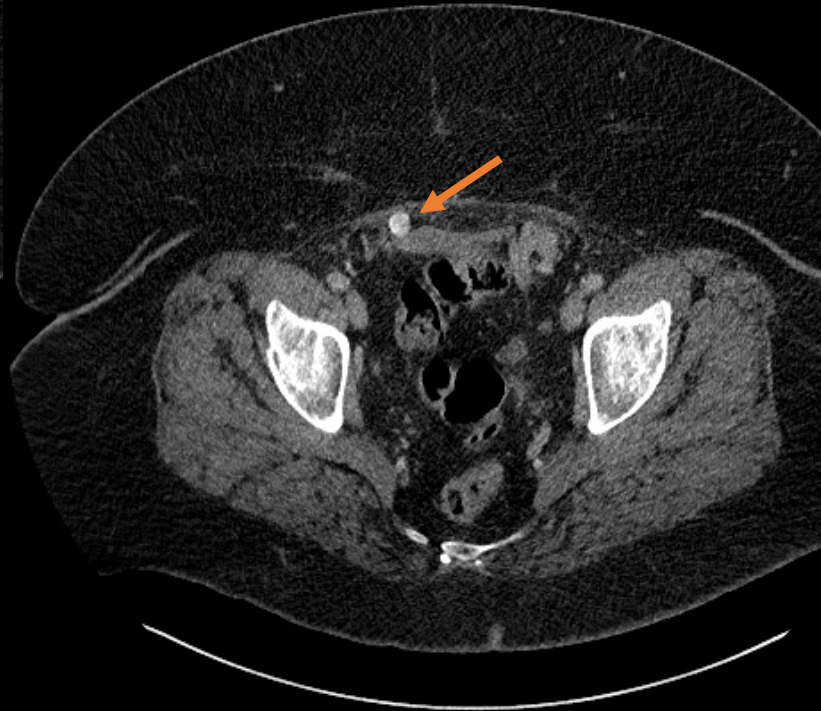
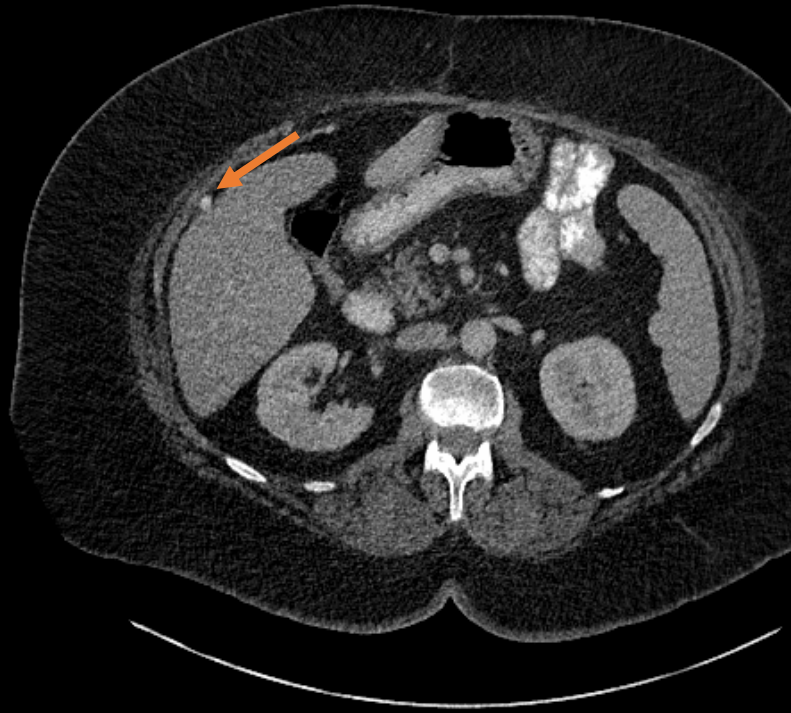


LET'S READ OUT



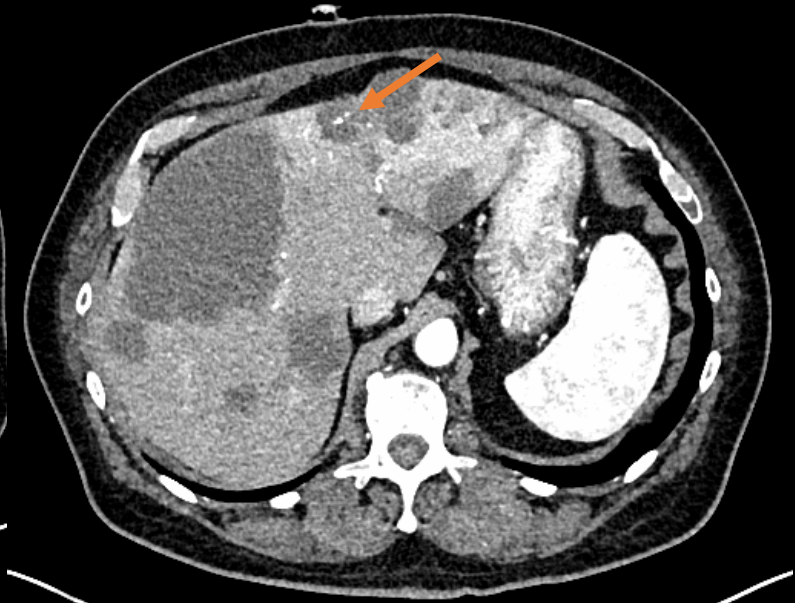
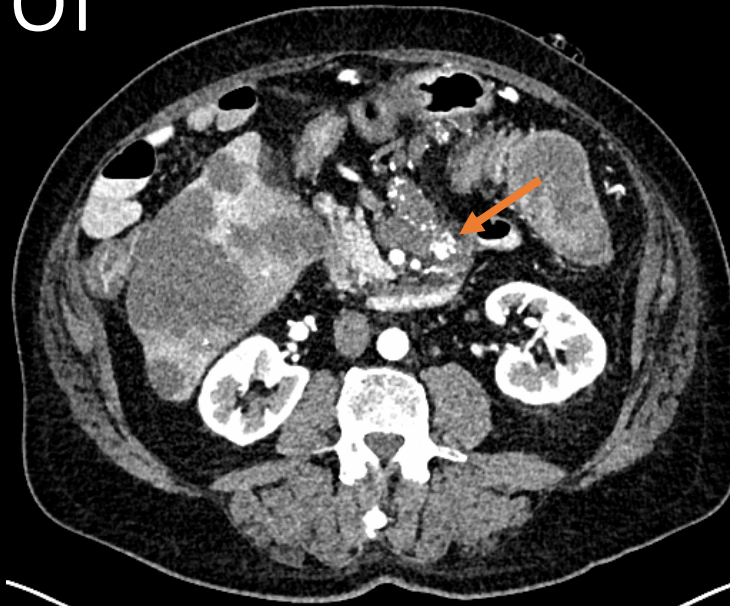
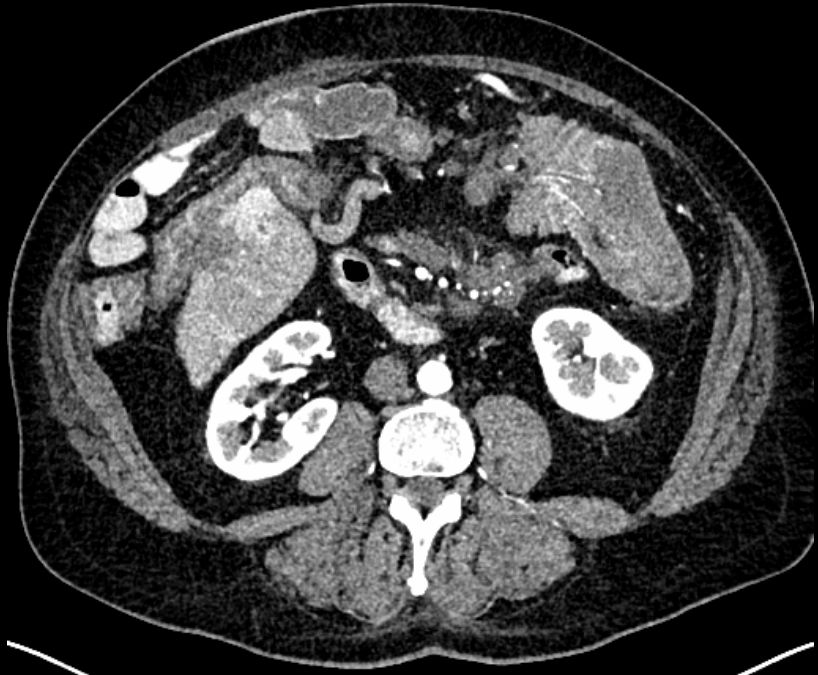
Guest: Dr. Aman Khurana  
Peritoneal Tidbits

# Serous Ovarian Carcinoma

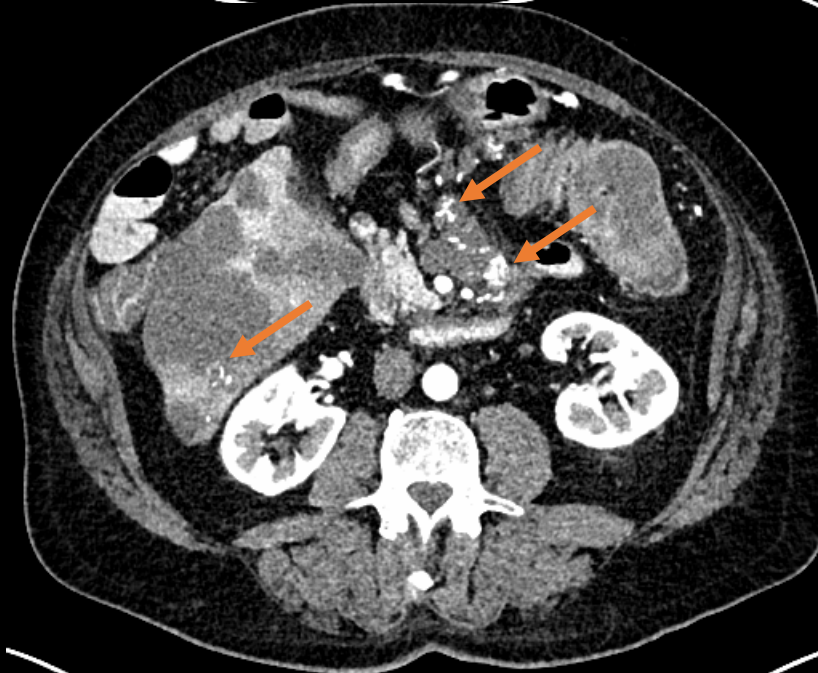


Peritoneal Calcified Tumor Deposits

# Mucinous GI Tumor

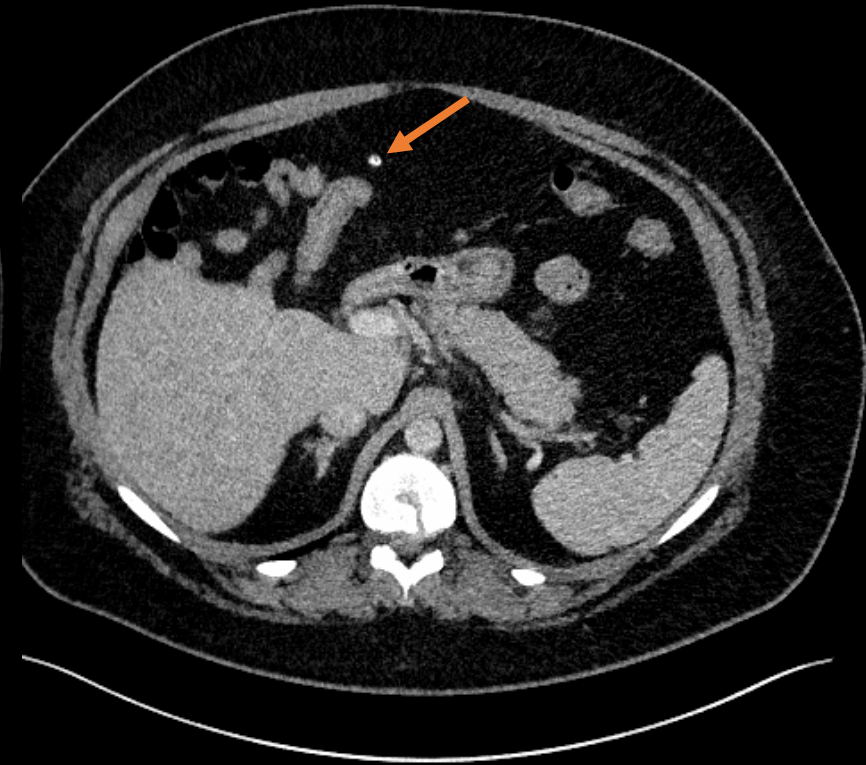
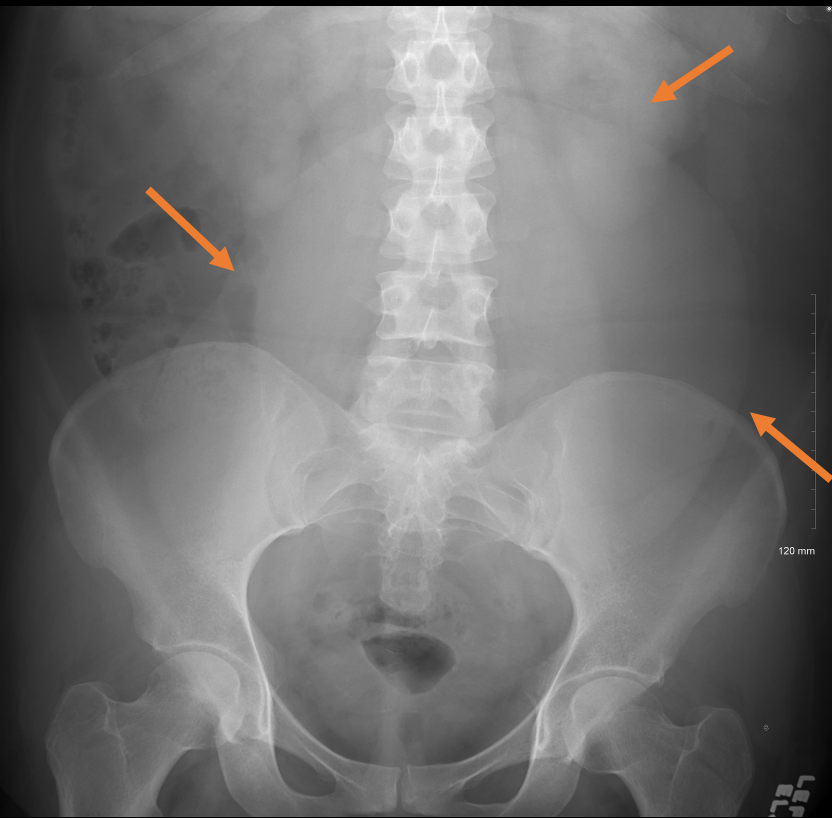


Mucinous GI tumor in transverse colon causing intussusception (above)





# Serous Ovarian Cystadenoma



Likely calcified epiploic appendage in upper abdomen but be careful about peritoneal mets if you see multiple calcifications like the first case



# Calcified Epiploic Appendage

